



TRAINING PROGRAMME ON SANITATION SAFETY PLANNING (SSP)

Towards citywide water and sanitation management

Date: September 3-6, 2019

Venue: Anil Agarwal Environment Training Institute (AAETI), Nimli, Rajasthan



What is SSP?

SSP is a step-by-step risk based approach to assist

in the implementation of the 2006 WHO

Guidelines for Safe Use of Wastewater, Excreta

and Greywater in Agriculture and Aquaculture.

The approach can be applied to all sanitary

systems to ensure the system is managed to meet

health objectives. Basically, we cannot prevent

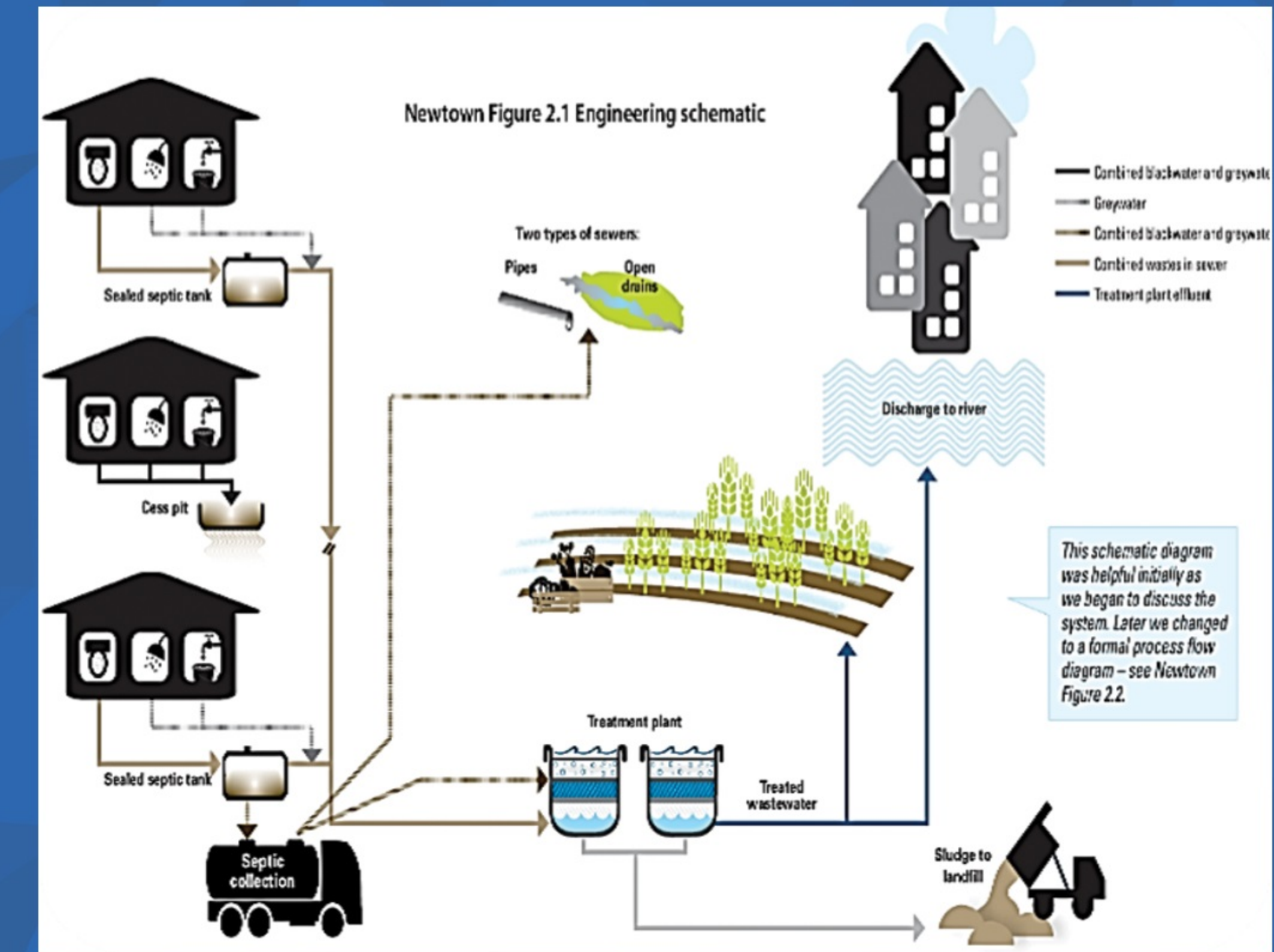
use of wastewater or sewage sludge to

agriculture or aquaculture but we can reduce

risks by taking necessary step-by-step actions so

that we can reduce risks in our food cycle.

SARI, IRAN WASTEWATER TREATMENT PLANT



THE RESULTS OF THE IMPLEMENTATION OF THE PROGRAM:

- . to improve public health and protect the health of human societies
- . Improving the safety of workers and employees related to sewage facilities
- . Ensuring the safety of products produced using wastewater
- . Protecting the health of users of green spaces which green areas are irrigated using wastewater effluent
- . Environmental protection
- . Promoting debates and policies and regulatory changes at the national level regarding the issue of sewage in the country

WHY IS SSP REQUIRED?

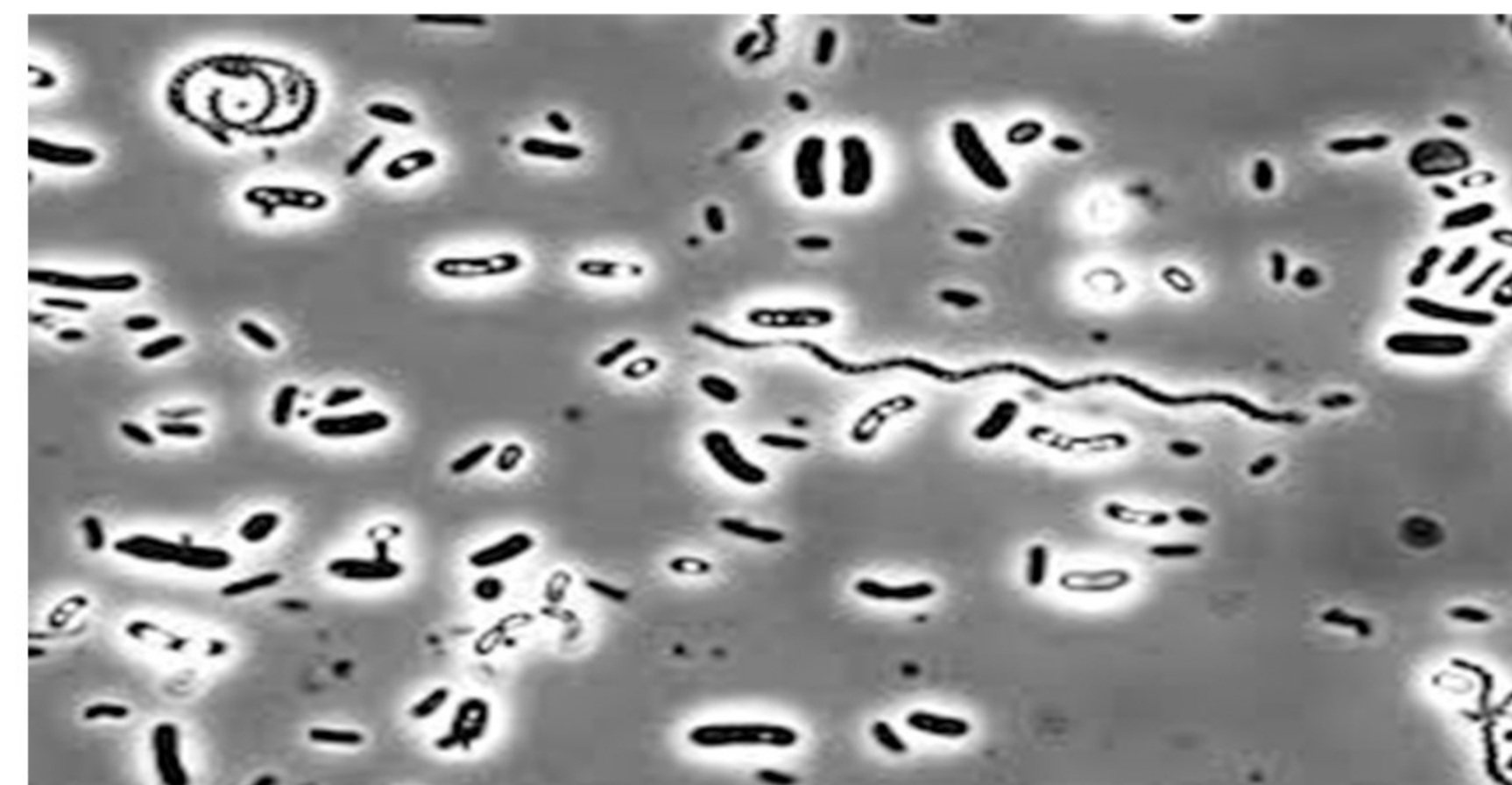
The Sanitation Plan helps to ensure the safe and sanitary operation of your food premises through clearly laid out or modified instructions and continued monitoring.





TYPES OF PATHOGENS PRESENT IN WASTEWATER:

Disease prevention programmes have centred upon four groups of pathogens potentially present in such wastes: **bacteria, viruses, protozoa and helminths.**



Safety Planning modules. Source: WHO (2015)

HEALTH RISKS ASSOCIATED WITH WASTEWATER USE:

Based on WHO 2016 The health hazards associated with direct and indirect wastewater use are of **two** kinds: the rural health and safety problem for those working on the land or living on or near the land where the water is being used, and the risk that contaminated products from the wastewater use area may subsequently infect humans or animals through consumption or handling of the foodstuff or through secondary human contamination by consuming foodstuffs from animals that used the area.

آب سالم زیربنای سلامتی و حیات



WHAT DO A WASTEWATER TREATMENT PLANT DO?

The basic function of wastewater treatment is to speed up the natural processes by which water is purified.

The main goal of wastewater treatment facilities is to protect humans and the ecosystem from harmful and toxic elements found in wastewater.

